

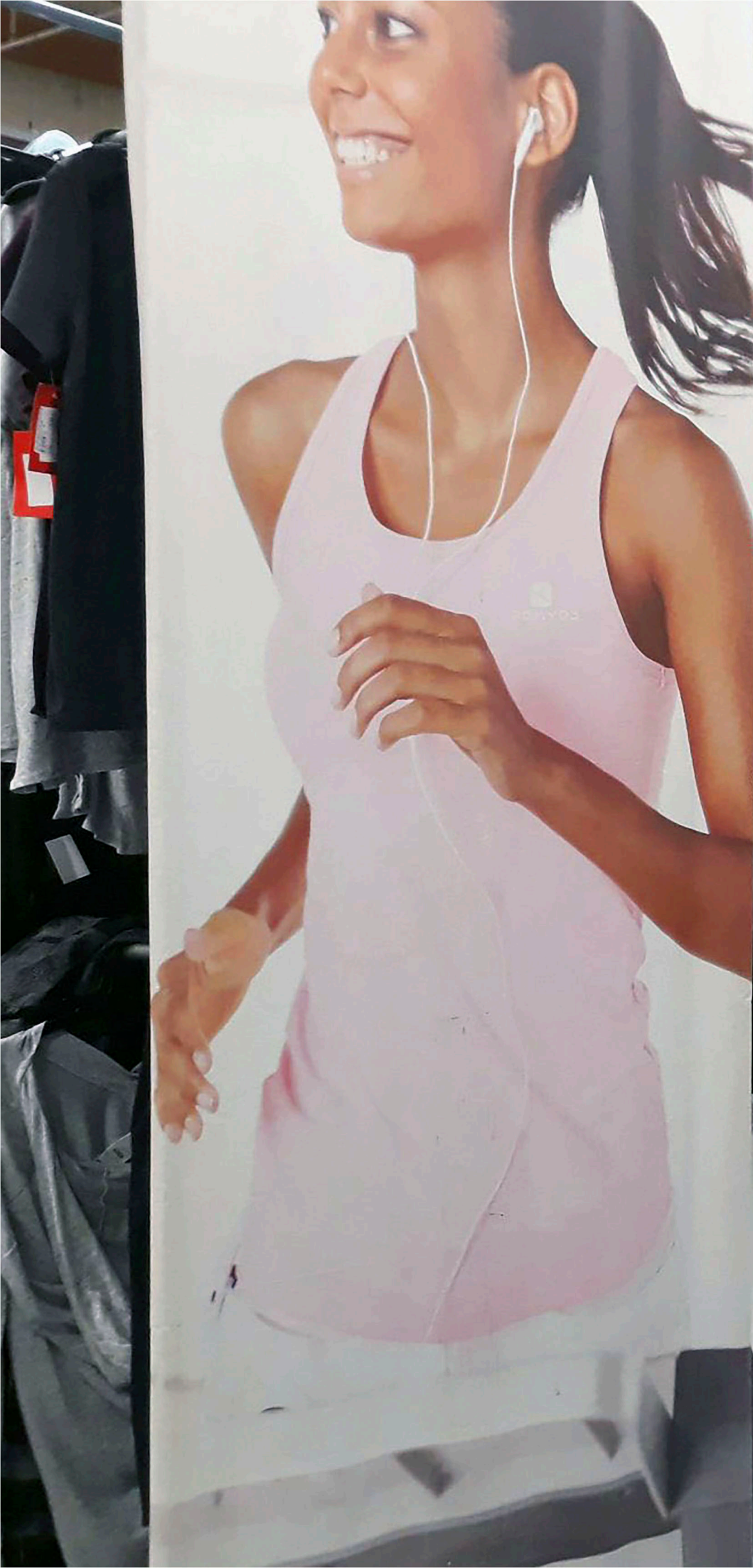


RESINFLOOR SYSTEM

PAVIMENTO DE RESINA

Water-based EPOXI pavement base coat application process





RESINFLOOR SYSTEM

PAVIMENTO DE RESINA

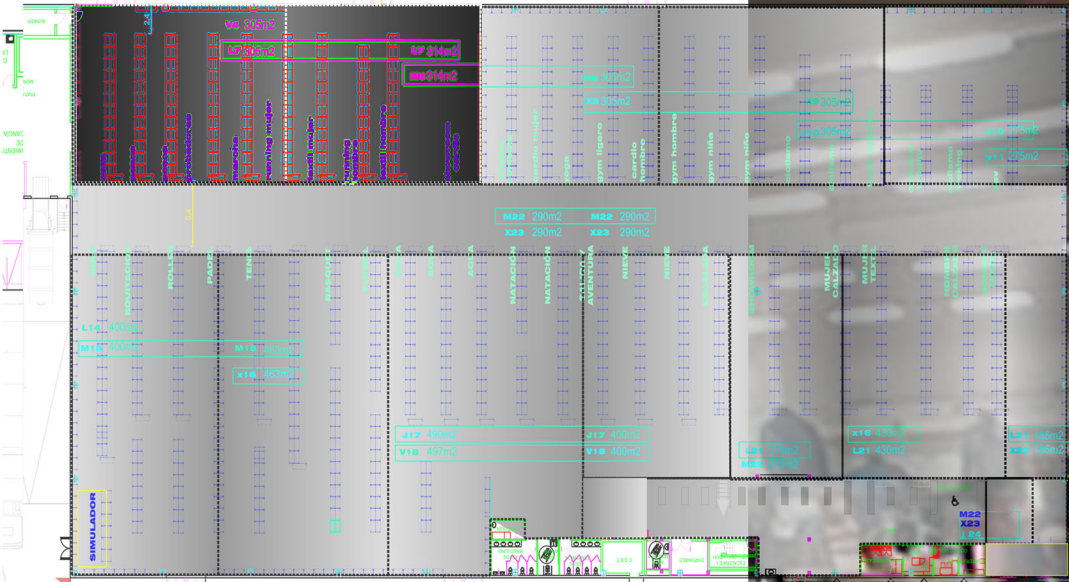
Water-based EPOXI pavement base coat application process



BASE COAT

NIGHT 1 OF APPLICATION: The removal of the gondolas by DECATHLON is required from an area of approximately 600m2 each night of application

In order not to compromise the drying times, the removal must be completed at approximately 11:00 p.m. -taking into account that the store closes at 9:00 p.m.- However, the machines will enter the area of action as soon as there is enough area to work, thus accelerating the process.

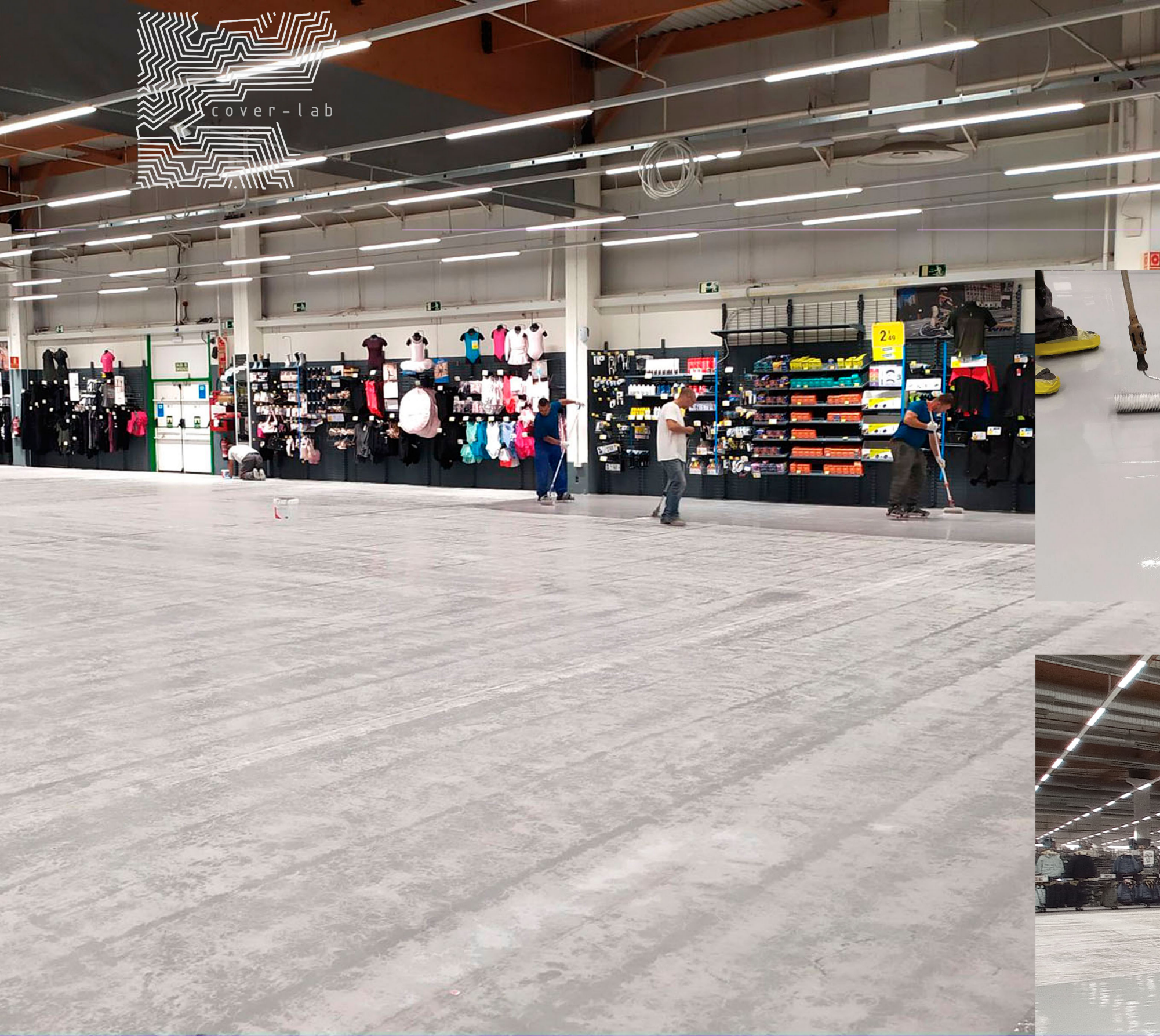


Example of area per night within the total plan



23:00 / 00:30 Diamond grinding and vacuuming.Surface preparation

SURFACE PREPARATION: Once the sufficient surface of the area to be treated (approximately 100 m2 of the total 600 m2) has been freed from the gondolas and the bottoms of the shelves in the walls, the rotary diamond grinding machines begin the roughening of the pavement to open the pore of the current surface. Once the surface is treated, it is vacuumed to remove all the dust produced by the abrasion.



00:30 / 3:30 **RESINDUR LAYER base coat application**

APPLICATION: The application of the mixture according to the state of leveling and imperfections of the support will be with a trowel and crossed roller. Application should be completed by approximately 3:30 am to ensure adequate drying time. During the application and drying process, it will not be possible to access the area to be applied.



3:30 / 7:30 drying BASE COAT LAYER

DRYING AT 20° C AND 65% RH: The drying period for a temperature above 20°C and a relative humidity not exceeding 65% is approximately 4 hours for the tread and placement of gondolas.



BASE COAT

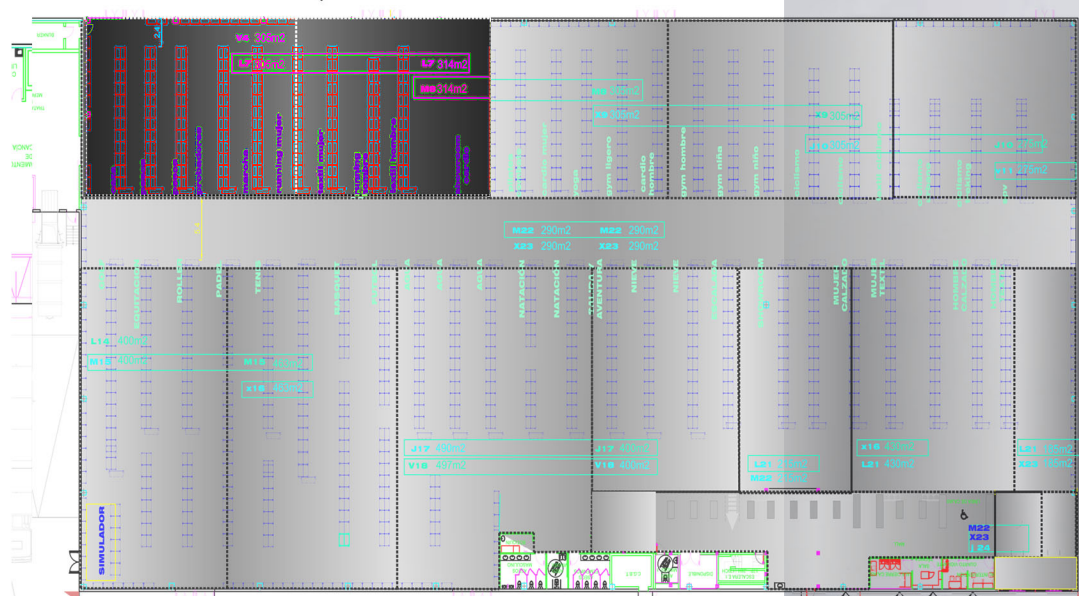
RESINFLOOR SYSTEM



FINITION LAYER

NIGHT 2 OF APPLICATION: The removal of the gondolas by DECATHLON is required from an area of approximately 600m2 each night of application

In order not to compromise the drying times, the removal must be completed at approximately 11:00 p.m. -taking into account that the store closes at 9:00 p.m.-. However, the machines will enter the area of action as soon as there is enough area to work, thus accelerating the process.



 Example of area per night within the total plan

SURFACE PREPARATION: Once a sufficient surface of the area to be treated (approximately 100m2 of the total 600m2) has been freed from the gondolas and the bottoms of the shelves, the rotary sanding machines begin the surface treatment of the base coat applied the night before. It is vacuumed to remove everything dust produced by abrasion.



00:30 / 3:30 **Aplicación de capa final FINITION LAYER**

APLICATION: The application of the mixture will be through the crossed roller technique.
· Aplication must be finished before 3:30 am to guarantee the necessary time for drying.
· During the application and drying process, it will not be possible to access the area to be applied.





DRYING AT 20° C AND 65% RH: The drying period for a temperature above 20°C and a relative humidity not exceeding 65% is approximately 3 hours for the tread and placement of gondolas.

3:30 / 6:30 drying FINITION LAYER

The resin final layer will be dry after 3 hours for the step, however the curing process begins then, until after 30 days it will not reach its final resistance and appearance.

-During the previous weeks to the intervention of floor changing, the store must check the condition of the gondolas' wheels so as not to damage the newly applied surface at hour of the placement for the opening, to guarantee the gondolas roll and allow easy sliding without damage.

-In a period of approximately 7 days, the surface should not be cleaned with water or liquid so as not to add water to the mixture that is evaporating and thus not alter the curing process.

www.ipsol-coverlab.com





FINITION LAYER

RESINFLOOR SYSTEM





5 € 99

8 € 99

8 € 99

49 € 99

29 € 99

4 € 99

1 € 99

FIN DE TEMPORADA

CÁRDIO
CARDIO
DONA - MUJER

3 € 99

GYM
PILATES
DONA - MUJER

7 € 99









